



# FastTrack BI

for Siebel CRM

FastTrack BI™ for Siebel CRM is a comprehensive end-user reporting environment that is easy to deploy, flexible and user-friendly.—Your business users can now report and analyze Siebel Systems CRM data in a language they can easily understand.

FastTrack BI brings the business intelligence contained in your CRM Solution to life, letting you make more profitable decisions and dramatically improve your return on investment.

# Information is the key to making strategic business intelligence decisions

**FastTrack BI** empowers your executives, managers, and frontline employees to access the rich data available in your Siebel CRM to make better tactical and strategic decisions that yield greater business results.

Offer simple and effective access to Siebel CRM data through an easy-to-use interface, in a language that business users understand

Provide business users with key insights in real time via direct access or mirror of the Siebel CRM production database

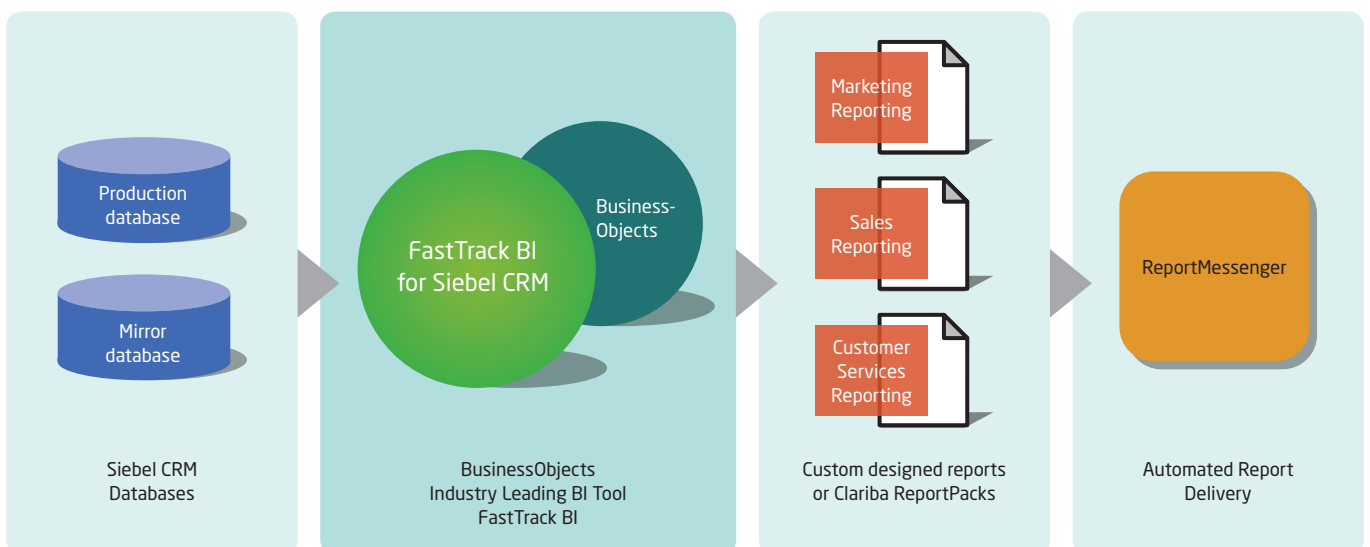
Eliminate non-standard, time-consuming data gathering and reporting by end-users, and create one version of the truth

Enrich your analysis and reporting with non-Siebel CRM data sources

Quickly deliver off-the-shelf reporting packs for your sales, marketing, and services teams – see *Clariba CRM ReportPacks™* and *Clariba ReportMessenger™*

Alleviate your overburdened IT staff and reduce bottlenecks with a simple-to-use data extract capability that's easy to deploy and inexpensive to maintain

Implement FastTrack BI within one week, guaranteeing a quick return on investment



## Access all CRM data

FastTrack BI for Siebel CRM allows easy access to the content-rich CRM data hidden deep within your organization.

- Complete coverage of the core Siebel entities:  
Accounts  
Contacts  
Activities  
Opportunities  
Campaigns  
Products

## Service Requests

- More than 1,300 reporting objects available instantly to create the most comprehensive reports and allow for in-depth analysis
- Configurable, pre-defined filters fit right into your business process for effortless report development

## Security

Protect and limit access to corporate data to ensure that information reaches authorized users only.

- Leverages Siebel visibility to ensure that Siebel users have access to the same data they have within the CRM system
- Password-protected access to reporting environment only for authorized users

## Rapid deployment

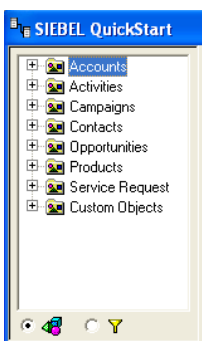
In just a few days, FastTrack BI for Siebel CRM can be up and running in your organization, providing your executives, managers, and frontline employees with the up-to-the-minute business intelligence data they need in order to be effective.

- Out-of-the-box Siebel CRM Reporting environment is available for immediate use in standard Siebel implementations.
- Our expert services team provides quick adaptation to customized Siebel environments.
- Reporting environment is based on the Siebel CRM production database or a mirrored environment—no complex and costly data warehouse is required.

## Industry-leading BI platform

FastTrack BI for Siebel CRM is based on the industry-leading BI platform BusinessObjects™, providing the most powerful ad hoc reporting and analysis environment available today.

- Secure your IT investment by implementing the leading business intelligence platform from BusinessObjects.
- Combine data from multiple sources with this future-proof, expandable solution that allows for reporting on any database or flat files regardless of format.



Entity	Objects Available
Accounts	~ 350
Contacts	~ 200
Products	~ 175
Opportunities	~ 400
Service Requests	~ 80
Activities	~ 175
Campaigns	~ 150

## Hardware and Software Requirements

### Reporting Environment

BusinessObjects Reporter 5.1.x or higher

– or –

BusinessObjects WebI 2.6 or higher

BusinessObjects Designer

### Siebel CRM

Siebel Systems CRM Enterprise or Professional 6.x or higher

Siebel Sales Force Automation

Siebel Call Center and Service



Clariba Consulting S.L. / Balmes 109, 4º 1ª / 08008 Barcelona, Spain  
info@clariba.com / [www.clariba.com](http://www.clariba.com)

For more information or to schedule a migration review please contact us at [sales@clariba.com](mailto:sales@clariba.com) or visit our website at [www.clariba.com](http://www.clariba.com)